



Santa Clara County

FireSafe

COUNCIL

Seth Schalet

CEO

Santa Clara County FireSafe Council

Bay Area Council (BAC) Meeting

February 4, 2025





Living with Fire

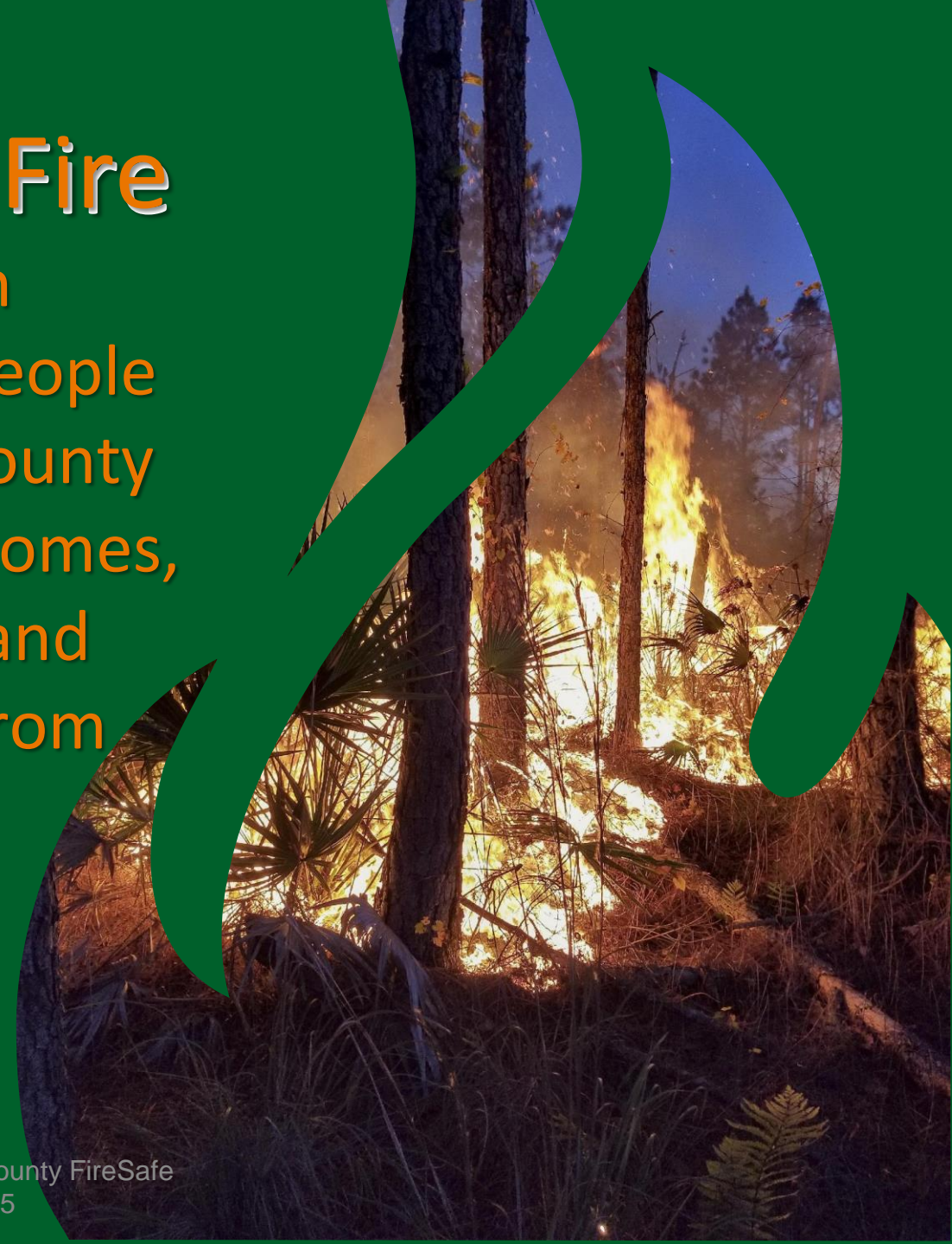
Our Mission

Mobilizing the people of Santa Clara County to protect their homes, communities and environment from wildfires.

Serving and with Support from:



Bay Area Council (BAC) Santa Clara County FireSafe Council Presentation 2/4/25

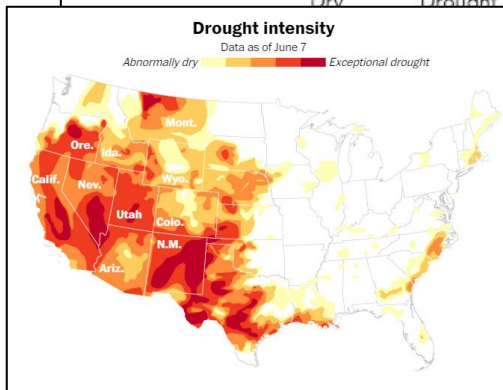
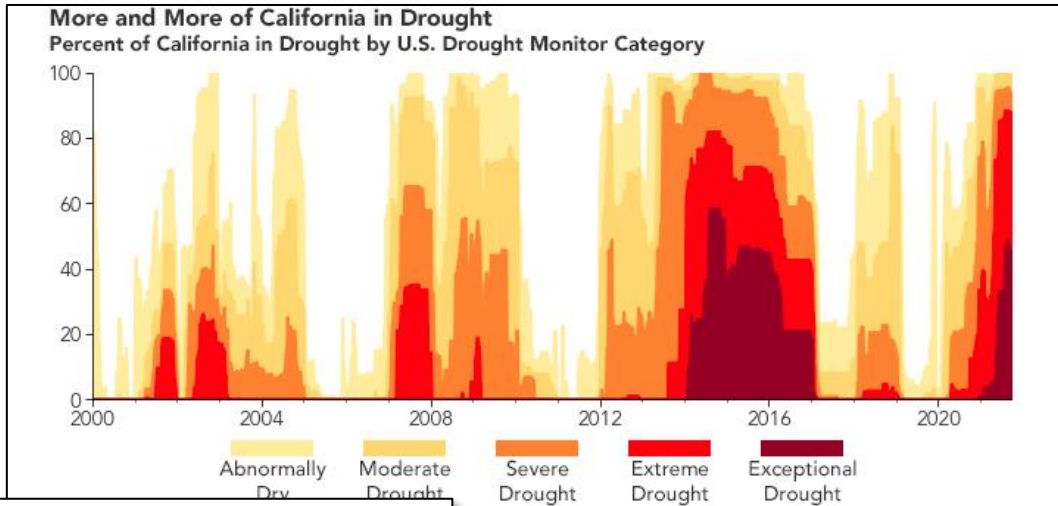


We all face a new reality. Wildfires are no longer an event, they are an increasing part of our lives, impacting everyone.

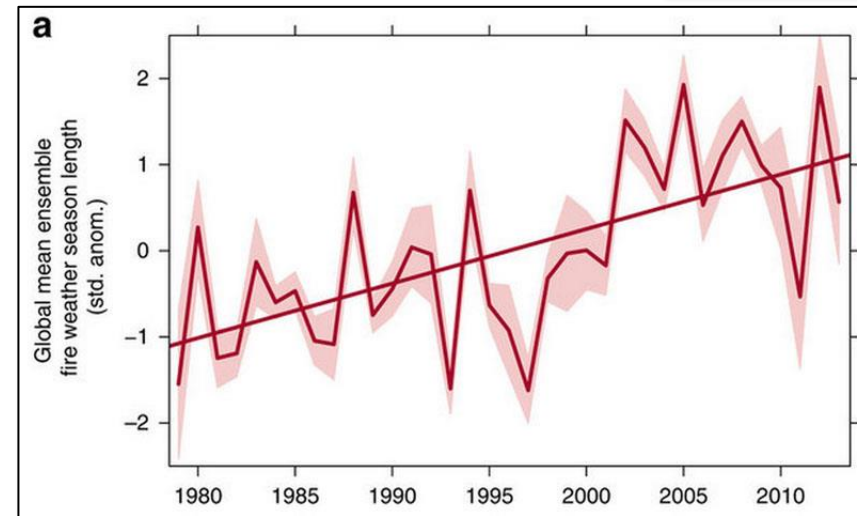
The FireSafe Council exists to mitigate the impact of wildfires in our county.

The Wildfire Threat Grows Bigger and Longer

The drought gets worse each year ...



Making the fire “season”
the fire “year” ...

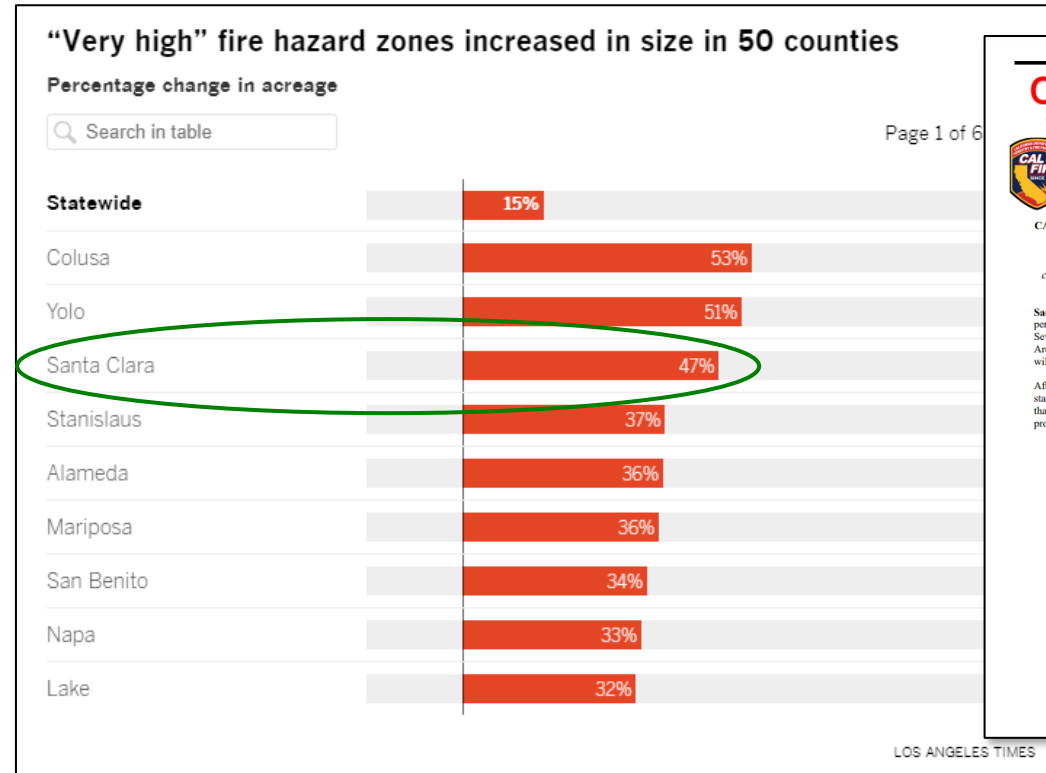


Compared with 20 years ago, the “fire season” is now starting 6-8 weeks earlier and lasting 8 weeks longer during the year.




Santa Clara County “Very High” Fire Hazard Zones up 47%

- **Dec 2022** - Santa Clara County has 3rd highest increase across CA for areas now considered in “very high” fire hazard zones.
- “Public education about where current wildfire hazards exist is essential to reducing the threat to local communities and maintaining access to affordable insurance,” said a statement from Insurance Commissioner Ricardo Lara. “I encourage Californians to ask questions in this public process and to learn more about the tools that exist to help communities and governments reduce their local risks.”



<https://www.latimes.com/environment/story/2022-12-27/more-than-half-of-rural-california-in-very-high-fire-zone>

CAL FIRE NEWS RELEASE
California Department of Forestry and Fire Protection

 CONTACT: CAL FIRE PIO
(916) 651-3473
@CAL_FIRE
calfire.dutypio@fire.ca.gov

RELEASE DATE: 12/14/2022

CAL FIRE Releases Updated Fire Hazard Severity Zone Map for Public Comment, Will Host 57 Public Hearings throughout California

After years of planning and collaboration with fire scientists, firefighters, stakeholders, and local community partners, the new map reflects changes in fire hazard in unincorporated, rural areas, as experienced in California over past years.

Sacramento – CAL FIRE - Office of the State Fire Marshal this week will begin a public comment period for the regulatory adoption process to update the existing map that captures Fire Hazard Severity Zones (FHSZ), which is a comprehensive map that ranks California’s State Responsibility Area (SRA)—or rural, unincorporated areas—based on the likelihood different areas will experience wildfire.

After years of work to develop a sound scientific basis and methodology with a range of experts and stakeholders, updates to this map bring this valuable tool and statutory requirement current in a way that accurately reflects today’s reality for wildfire hazard throughout the state. More specifically, this process includes a few details to know below:

- **This current revision only updates areas in California’s unincorporated, rural areas where wildfires tend to be frequent**—called the “SRA” or “State Responsibility Area.” This does not include cities or large urban areas.
- **This process does not change rules or requirements for homes or properties in these areas related to wildfire prevention, preparedness, and mitigation.** The same requirements will remain regardless of whether a particular area is reclassified or not.
- **The last Wildfire Hazard Severity Zone map was updated in 2007 and required an update.** A lot has happened since 2007. Using the best available science with academic researchers and others, this updated map reflects the impacts of a changing climate and includes a variety of other key factors.
- **This is the beginning of a nearly two-month public process.** These maps are being shared for your comments and questions during the regulatory process. A total of 57 public hearings will be held throughout the state with the goal of hearing from you.
- **An online public toolkit and interactive map is available to help answer your questions.** Take some time to explore your address, read the FAQs, learn about the process and where to turn. A hotline is also available to help answer your questions directly and to help increase access.



Wildfire Hazard Map

Santa Clara, Santo Cruz, San Mateo

Our region is surrounded by high risk wildfire zones, with many residents living in these areas of greatest danger



Who is the SCC FireSafe Council?

- Established in 2001 as 501(c)(3)
- Organization of wildfire and forestry experts focused on innovative wildfire mitigation solutions across the County
- Provides program leadership for large scale hazardous fuel reduction projects
- Conducts community education and facilitates Firewise® communities
- Authors the SCC Countywide Wildfire Protection Plan and partner collaborations

Learn Prepare Take Action Projects About Contact Resources Subscribe [Donate](#)

Mobilizing the people of Santa Clara County to protect their homes, communities and environment from wildfires.

LEARN
COVID-19 Update
Do you reside in Santa Clara County's Wildland Urban Interface? (WUI)
Wildfire safety and evacuation
Firewise Community Workshops

PREPARE
Chipping Program
Creating Defensible Space
Home Hardening
Defensible Space Inspection Requests-CAL FIRE Update 9/20/21- AB 38 Guidance
Home Ignition Zone (HIZ) Assessment

TAKE ACTION
Become a Volunteer
No Time? → Donate



Important Contributions from the FireSafe Council



Trusted Advisor

- Wildfire and forestry expertise
- Non-profit with genuine mission: Independent 501(c)3

Public and Private Sector Enabler

- Brings together multiple jurisdictions or contractors
- Fewer regulations and bureaucracy, lower cost
- More agile and nimble to speed progresses to completion
- Can drive new, advanced innovations very quickly

Community Action Leader

- Educator and resource warehouse
- Detailed risk assessments and mitigations
- Firewise Communities facilitator
- Trusted partner




SCCFSC Awarded \$7.5M for Forest Health Project

\$7.5M award supports forest health and wildfire mitigation treatments within the Los Gatos Creek Watershed

“Landscape scale” project focus on creating resilient fire-adapted ecosystems, protecting crucial watersheds, promoting the long-term storage of carbon, and reducing the severity of wildfires

Unique collaboration integrating multiple stakeholders from CALFIRE, San Jose Water, MidPen Open Space, SC County Parks and CA Climate Investments.



Los Gatos Creek Watershed Collaborative awarded \$7,500,000 CAL FIRE Forest Health Grant

The Santa Clara County FireSafe Council will serve as the CAL FIRE Forest Health Grant recipient and grant administrator for the collaborative's implementation of forest health and wildfire mitigation treatments covering 955 acres in the Los Gatos Creek Watershed.

June 24, 2021, Saratoga, CA—Today, the Santa Clara County FireSafe Council (SCCFSC) announced that the Los Gatos Creek Watershed Collaborative has been awarded a \$7,500,000 CAL FIRE Forest Health Grant. This landscape scale forest health project focuses on creating ecosystem resilience, mitigating the risk of catastrophic wildfire while enhancing the safety of communities in the southern Silicon Valley, protecting sensitive native and endemic species and habitats, and protecting the drinking water in Lexington and Elserman reservoirs which supply over 100,000 residents.

The collaborative, formed in 2020, includes San Jose Water, Midpeninsula Regional Open Space District, Santa Clara County Parks, and the Santa Clara FireSafe Council. This collaboration, a unique, multi-stakeholder approach, facilitates each stakeholders' efforts on landscape level treatments — altering the course of drastic changes that important ecosystems are experiencing. The collaborative has identified an interconnectable mosaic pattern of treatment areas that, with ecologically sensitive treatments, meet the goals of the Forest Health Program to:

- Establish healthy, resilient fire-adapted ecosystems to protect and conserve natural resources.
- Protect upper watersheds where important regional water supplies originate.
- Promote the long-term storage of carbon and reduce the severity of catastrophic wildfire thereby increasing community and forest ecosystem protection.

The Los Gatos Creek Watershed partners each express their gratitude to CAL FIRE and look forward to commencing environmental surveys and field-based activities. The project is expected to be completed by March 31, 2025. Accordingly, the principals from the collaborative partners add the following statements:

In Partnership with:



SANTA CLARA COUNTY PARKS



SCCFSC Leads Countywide Wildfire Protection Collaborative

\$250,000 award to SCCFSC to spearhead the creation of the 2022/23 Community Wildfire Protection Plan (CWPP)

Unique collaborative brings together partners from CAL FIRE, Santa Clara County Fire Dept, County of Santa Clara Office of Emergency Management and Department of Planning and Development.

This integrated Strategic Wildfire Mitigation Plan will prioritize removal of critical wildfire hazards for public safety, infrastructure and property protection, and to strengthen wildfire resiliency across the County.

For Immediate Release

Contact: [Seth Schalet](mailto:Seth.Schalet@scsfiresafe.org)
Santa Clara County FireSafe Council
408-975-9591 or
CWPPteam@scsfiresafe.org



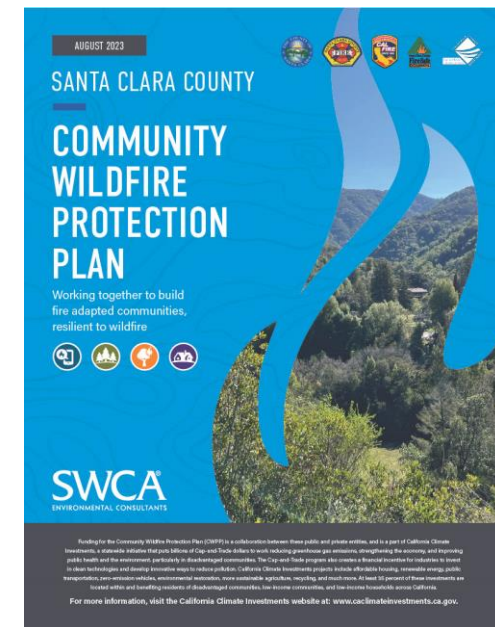
Santa Clara County FireSafe Council leads collaboration with County wildfire officials to update important wildfire preparedness document

November 10, 2022, Saratoga, CA—Santa Clara County FireSafe Council announced today it is leading a project to update the county's Community Wildfire Protection Plan (CWPP) with support from partners including CAL FIRE, Santa Clara County Fire, County of Santa Clara Office of Emergency Management, County of Santa Clara Department of Planning and Development and others. Five public information meetings have been scheduled.

CAL FIRE awarded a \$250,000 grant to the Santa Clara County FireSafe Council (SCCFSC) to lead the 2022/2023 Community Wildfire Protection Plan (CWPP) update. With this grant, SWCA Environmental Consultants (SWCA) has been selected to update the current CWPP (drafted in 2016) in coordination with regional stakeholders. SWCA also worked on the 2016 CWPP led by the Santa Clara County Fire Department (SCCFD). The CWPP update will build on the current CWPP and will cover the entire county. The planning process is expected to go through August 2023.

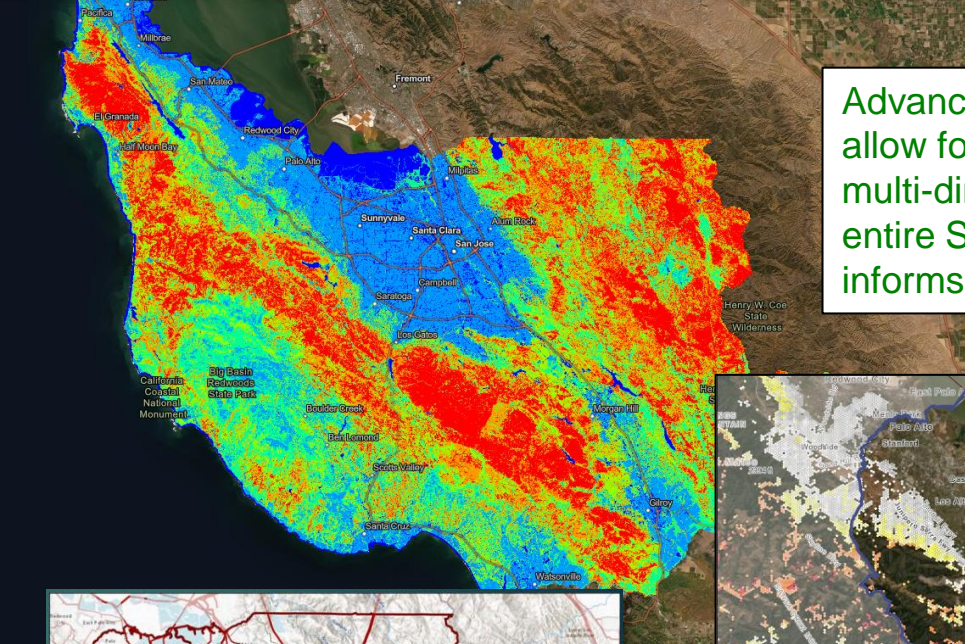
CWPPs are a critical element for county wildfire preparedness. According to Seth Schalet, Chief Executive Officer for Santa Clara County FireSafe Council, "Wildfire frequency and severity is on the rise, causing further risk to our local communities. Public safety, property, air quality from toxic wildfire smoke, critical infrastructure such as cell towers, the electrical grid, reservoirs, and water systems along with vital industries such as the county's agriculture producers can all be compromised by a large wildfire. Updating the CWPP will strengthen the ability of Santa Clara County to be more resilient and prepared for wildfires".

By having this strategic plan for all the local agencies, it allows them to prioritize forest health projects, shaded fuel breaks, escape routes, and public education campaigns. The CWPP will



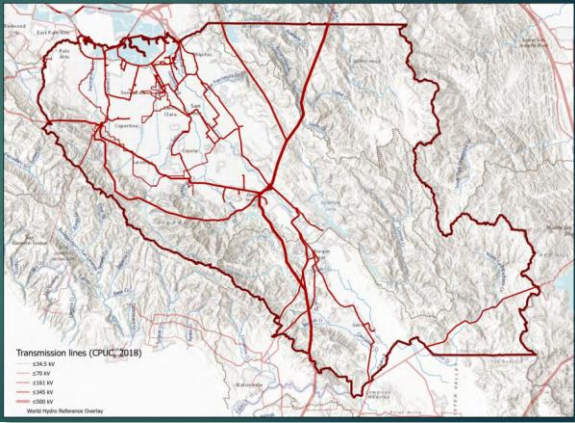
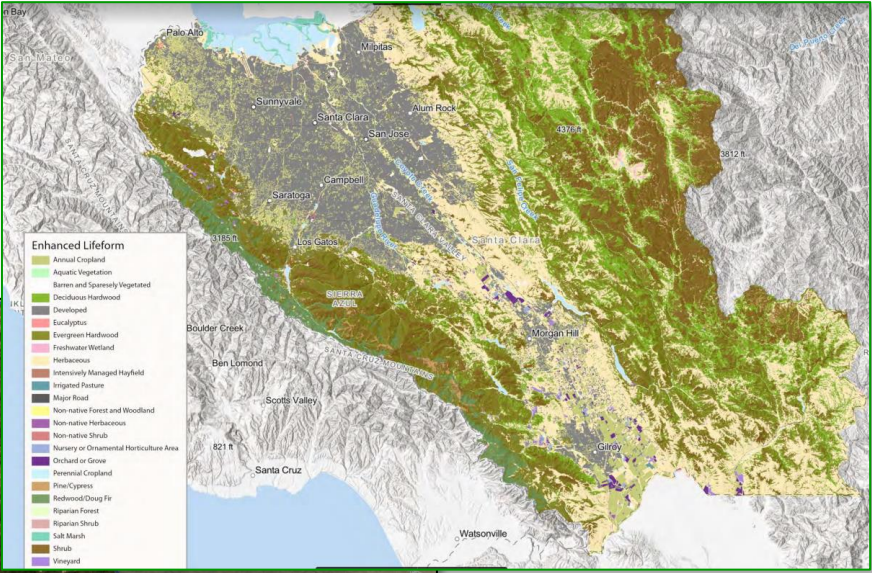
State-of-Art Analysis and Mapping Drives Mitigation Plan

3-County Wildfire Hazard and Risk Map

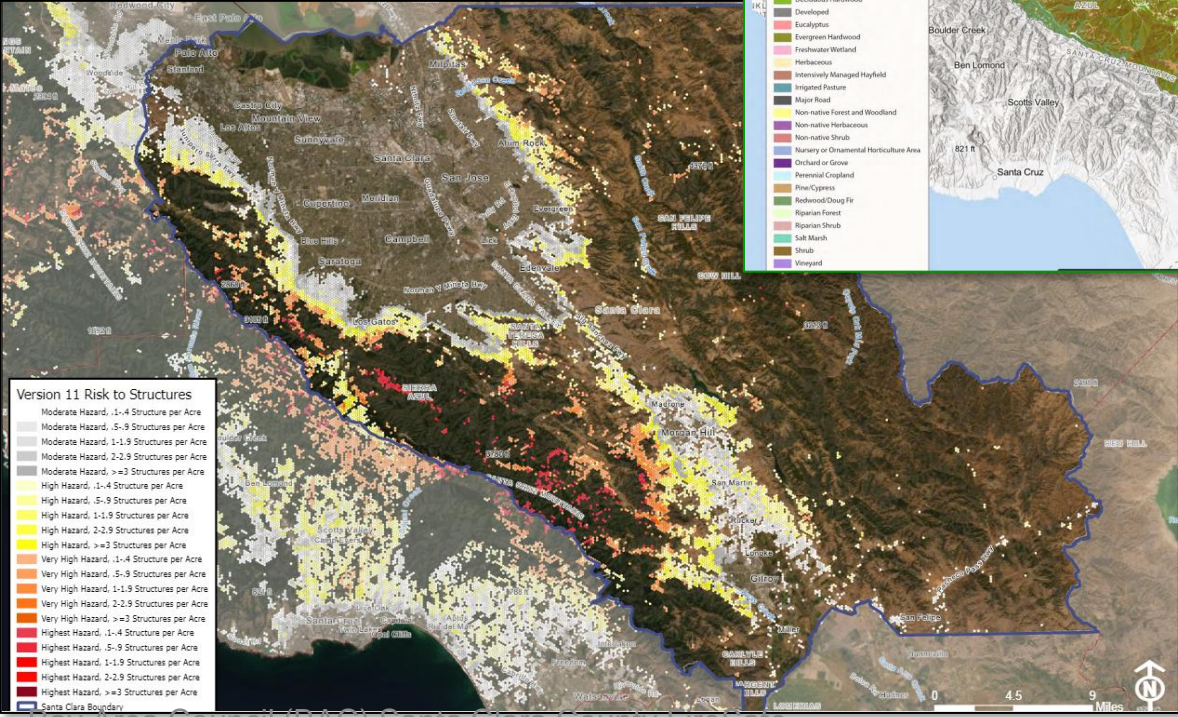


Advanced imaging technologies allow for very high resolution, multi-dimensional analysis across entire South Bay Area, which informs prioritized mitigations

Enhanced Lifeform Map - Specific Vegetation Types



Power Grid Map



Bay Area Council (BAC) Santa Clara County Fire Safe Risk to Structures Map – Details of Properties with Risk Level

Recent Grants & Awards

- SCCFSC Awarded \$175,000 for County Coordinator Role
- \$6.3M New Forest Health Expansion in Phase Two Award
- SCCFSC and San Jose Water Team to Protect Water Systems with AI based wildfire smoke sensors
- SCCFSC Awarded \$1.45M for High Priority Fire Prevention

For Immediate Release

Contact: Seth Schalet
Santa Clara County FireSafe Council
408-975-9591 or
Info@scclfiresafe.org

Santa Clara County FireSafe Council Awarded County Coordinator Grant Will Lead County-Wide Collaboration And Coordination Among All Wildfire Mitigation Groups With \$175,000 CAL FIRE Grant

January 20, 2023, Saratoga, CA—Santa Clara County FireSafe Council (SCCFSC) announced today it has been awarded a \$175,000 CAL FIRE County Coordinator Grant. The purpose of the County Coordinator Grant is to educate, encourage, and develop county-wide collaboration and coordination among Santa Clara County's various wildfire mitigation groups. An independent 501(c)(3) nonprofit, Santa Clara County FireSafe Council's grant provides for the following:

“Robust effective increases County's endorse ensuring “We can be t “Luckily, jurisdic coord commu “We hav several

San Jose Water Company and Santa Clara County FireSafe Council Announce Partnership to Protect Regional Watersheds and Drinking Water Systems

Contract includes AlcheraX FireScout AI wildfire cameras in the San Jose Water service area and establishes a Community Wildfire Mitigation Pilot Program to reduce community wildfire risk.

November 17 2022, Saratoga, CA—San Jose Water (SJW), Inc. announced today it has entered into a strategic partnership with The Santa Clara County FireSafe Council (SCCFSC), an independent 501(c)(3) nonprofit, to provide a series of technology solutions supporting SJW's commitment to environmental stewardship and water resources management. With a focus on reducing wildfire risk and creating a consortium to monitor areas at elevated risk to wildfire in SJW's service area, this partnership will protect critical infrastructure and provide monitoring and early detection of wildfire in Santa Clara County.

The first projects include serving as a value-added reseller (VAR) for AlcheraX's FireScout technology which will add an artificial intelligence (AI) capability to wildfire early detection and monitoring on SJW lands. The SCCFSC will provide multiple FireScout systems to SJW, provide consulting for the setup, configuration and implementation of FireScout. This project is part of SCCFSC's larger regional effort to coordinate multiple land management projects including:

Santa Clara County FireSafe Council Awarded CAL FIRE High Priority Fire Prevention Grant

\$1,456,579 Award Supports Fuel Break and Escape Route Projects

October 7, 2022, Saratoga, CA—Today, the Santa Clara County FireSafe Council (SCCFSC) announced that CAL FIRE has awarded a new \$1,456,579 Fire Prevention Grant to the Santa Clara County FireSafe Council. The CAL FIRE grant supports priority wildfire mitigation and public safety projects in CAL FIRE's Santa Clara Unit that will be conducted by Santa Clara County FireSafe Council. The projects include:

- East Dunne Avenue Escape Route Project
- Loma Chiquita Road Escape Route/Fuel Break Project
- Mount Chual Spur Road Escape Route/Fuel Break Project
- Mount Madonna/Summit Road Escape Route/Fuel Break Project

Specifically, a more detailed description of the Hazardous Fuel Reduction projects (HFR) included are:

1. East Dunne Avenue Escape Route Project. This grant provides support to complete pre-implementation of CEQA environmental compliance documents and roadside fuel treatment. The planning and environmental compliance supports the implementation of three phases of the project along East Dunne Avenue, at Holiday Drive to the entrance of Henry Coe State Park in Morgan Hill, California, with the objective to protect life and property in the Holiday Lakes Estates, Jackson Oaks, and Anderson Lake County Park, and Finley Ridge communities by reducing the risk of wildfires.
2. Loma Chiquita Road Escape Route/Fuel Break Project. This grant provides the support to complete pre-implementation of CEQA environmental compliance documents and roadside fuel treatment. The planning and environmental compliance would support the implementation of 29 acres of fuel break treatment along a total length of 3 miles. Santa Clara County FireSafe Council will begin at the intersection of Loma Prieta Road and Loma Chiquita Road heading eastward. Located in the Santa Cruz Mountains between Agtos and the southern end of San Jose near Morgan Hill, Loma Chiquita Road generally follows the watershed boundary between Llagas and Lajas Creeks and makes an effective fuel break in an area with a history of large, fast-moving wildfires. Residents will need to rapidly evacuate to prevent becoming trapped. This roadside fuel break is part of CAL FIRE's pre-fire plan, and part of a network of roadside fuel breaks in the surrounding watersheds. By reducing vegetation in the corridor, Santa Clara County FireSafe Council will help prepare the road corridor to be used for fire suppression operations and to protect residential properties.

14380 Saratoga Avenue, Saratoga, CA 95070 • Phone (408) 975-9591 • www.SCCFiresafe.org



Direct Beneficiaries of the SCC FireSafe Council

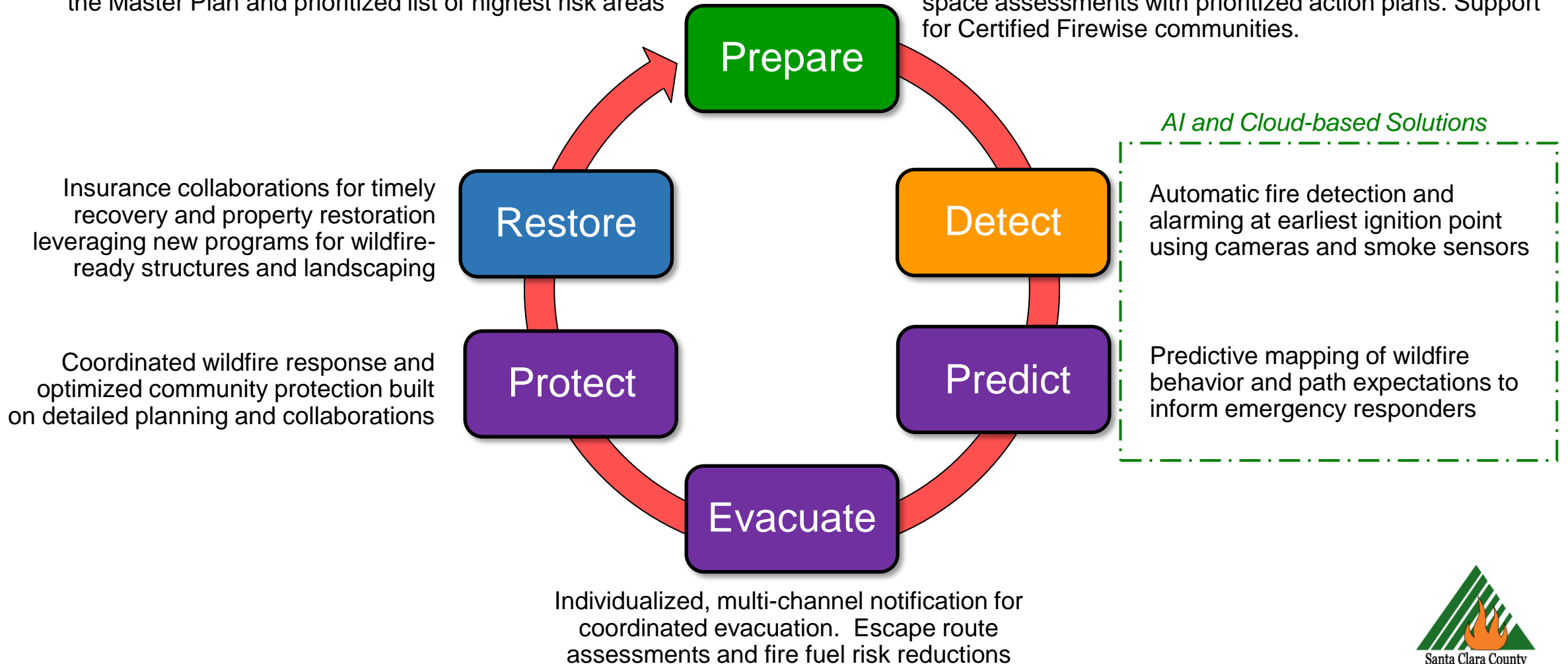
- State and Regional Fire Depts (CAL FIRE, SCCFD, etc.)
- County and City Municipalities
- Utility Providers (PG&E, San Jose Water, Valley Water)
- Insurance Providers
- Industry
- Underserved, Lower-Income Communities that Lack Resources Via Climate
- Justice and Equity Lens
- .. And Residents, Businesses and Communities



Building Integrated Wildfire Mitigation Solutions

County: CWPP (Countywide Wildfire Protection Plan) integrated across stakeholders and the public serving as the Master Plan and prioritized list of highest risk areas

Local Communities: Education and outreach, hazardous fire fuel reduction, home hardening solutions, defensible space assessments with prioritized action plans. Support for Certified Firewise communities.



New AI Solution Partners Enable Intelligent Integration

FireSafe Council's growing portfolio of best-in-class solution providers, integrated under one strategic vision, provides synergies not available elsewhere.

This alliance is committed to leveraging advanced technology to protect our forests and communities from the devastating impact of wildfires.

New AI-based, ultra-early fire detection and monitoring solutions can empower firefighters with crucial time to prevent wildfires from spreading.

These partnerships reinforce our shared vision of creating a safer and more sustainable environment.

Together, we can make a significant difference in mitigating the risks posed by wildfires and preserving our natural ecosystems.

For Immediate Release

Contact: [Seth Schalet](mailto:sschalet@scctfiresafe.org)
Santa Clara County FireSafe Council
408-975-9591 or
sschalet@scctfiresafe.org




Santa Clara County FireSafe Council Enhances Early Wildfire Detection Portfolio With Dryad Networks SILVANET Platform Partnership Expands Santa Clara County FireSafe Council's Leadership in Ultra-Early Wildfire Detection Solutions

July 5, 2023, Saratoga, CA—Today, Santa Clara County FireSafe Council (SCCFSC) announced it has entered into a partnership with Dryad Networks to offer their SILVANET platform as part of SCCFSC's product and services portfolio. This partnership enables SCCFSC to resell the Silvanet platform, a wildfire detection solution that provides real time detection of wildfire and air quality alerts to make communities safer from wildfire and airborne environmental hazards and reduce environmental destructive CO2 emissions.

Silvanet provides ultra-early fire detection, forest health and growth monitoring solutions for public and private forests. It provides actionable insights based on live data gathered from Silvanet's solar-powered sensors with embedded artificial intelligence that measure various gases, temperature, humidity and air pressure. Silvanet's scalable, distributed LoRaWAN mesh gateways enable large-scale deployment of multi-party sensor networks within forests of all types.

"When it comes to wildfires, time is of the essence. Dryad's AI based Silvanet platform provides ultra early fire detection, sensing carbon monoxide, hydrogen and other gases emitted by pyrolysis in the early stages of a wildfire, giving fire fighters valuable time and a chance to extinguish the fire before spreads out of control", according to Seth Schalet, CEO of Santa Clara County FireSafe Council. "We want to provide our clients with proven options to reduce wildfire risk, help them with product selection, pilot testing a deployment at scale. We now have the leading solutions to facilitate this."

Carsten Brinksulte, CEO and Co-founder of Dryad Networks, said: "We are very pleased to be working with the Santa Clara County FireSafe Council to scale our technology. At Dryad, we are committed to leveraging advanced technology to protect our forests and communities from the devastating impact



Santa Clara County FireSafe Council
Mobilizing the people of Santa Clara County to protect their homes, communities, and environment from wildfires



Santa Clara County FireSafe Council And AlcheraX Inc., Partner To Bring Leading Edge AI Wildfire Technology Solutions For Early Detection And Wildfire Mitigation

Consulting and Resale Agreement enables Santa Clara County FireSafe Council to add AlcheraX Inc., Solutions to their Wildfire Mitigation and Services Programs

For Immediate Release

Contact: [Seth Schalet](mailto:sschalet@scctfiresafe.org)
Santa Clara County FireSafe Council
408-975-9591 or
sschalet@scctfiresafe.org



Santa Clara County FireSafe Council Partners with N5 Sensors, Inc. Reseller agreement enables Santa Clara County FireSafe Council to add N5's AI-Enabled NSSHIELD platform for early wildfire detection to their portfolio.

June 21, 2023, Saratoga, CA—The Santa Clara County FireSafe Council (SCCFSC) announced today it has entered into a partnership with N5 Sensors, Inc., to offer their NSSHIELD™ platform as part of SCCFSC's product and services portfolio. This partnership enables the resale of NSSHIELD™, a wildfire detection solution that provides real time detection of wildfire and air quality alerts via an end-to-end architecture that leverages cloud-connected multimodal sensors, and AI to make communities safer from wildfire and airborne environmental hazards.

Leveraging a network of ChemNode™ devices, each containing the most advanced sensors for gas, chemicals, particulates, heat and environmental conditions along with multiple communication options, the N5 ecosystem provides an interactive dashboard for visualizing sensor data and fire alerts. This real-time data enables first responders to identify wildfire faster and to analyze local conditions for safe and effective management of fire-fighting resources. The system also provides air quality information, further protecting community members.

According to Seth Schalet, CEO of Santa Clara County FireSafe Council "The nature of wildfires is evolving, coupled with population and structure growth in the Wildland Urban Interface (WUI) areas in Santa Clara County, increasing wildfire risk. With NSSHIELD, our clients have the ability to detect wildfires in the smoldering phase, hours before they spread. Santa Clara County FireSafe Council's portfolio enables us to offer completely integrated solutions, which include early detection, product pilot testing, and cross-sector collaboration, prioritizing risk mitigation to protect life and property in Santa Clara County's WUI."

Council (SCCFSC) announced today it has fire camera technology to SCCFSC's AlcheraX's FireScout portfolio of leading detection AI solution that detects the early FireScout provides preparedness support, response with the most connected wildfire response process.

able using IR cameras (91% accuracy). Final direction and degrees helping the detection enables customers to connect any

ht conditions, population, and structure County increasing, along with wildfire risk. Larger fires in areas with increased Santa Clara County FireSafe Council. Completely integrated solutions, or point-to our clients that include early detection, mitigation and early response to protect life

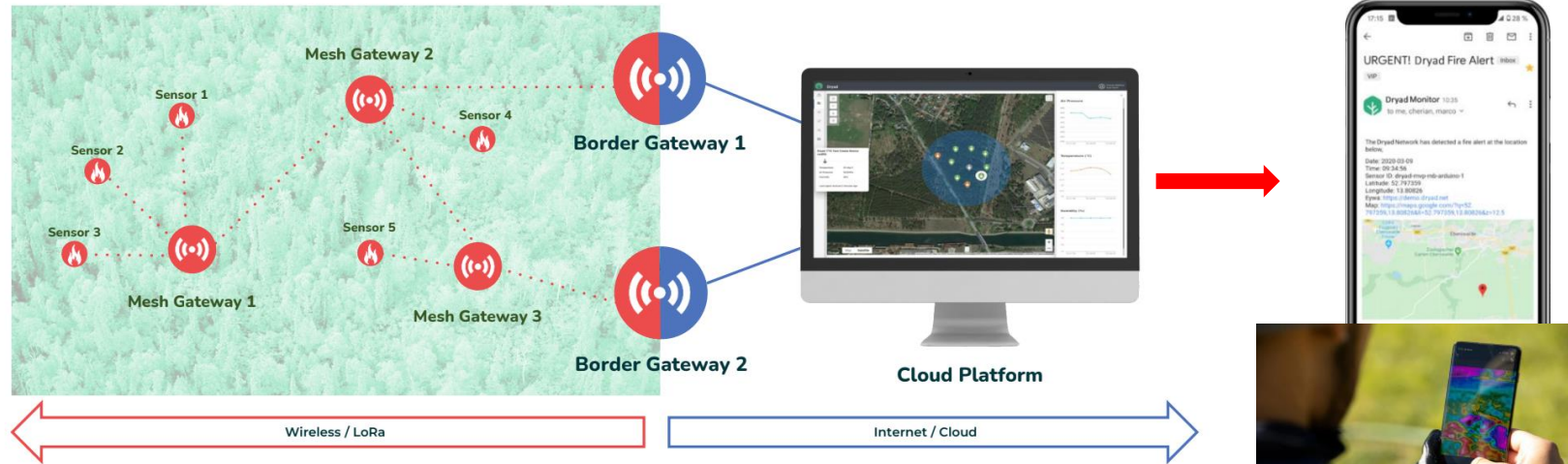


FSC Launches Advanced Wildfire Detection Network



FireSafe Council's partnerships with N5 Sensors and Dryad provide the most advanced wildfire detection capability for identifying wildland fires shortly after ignition and before they become catastrophic events.

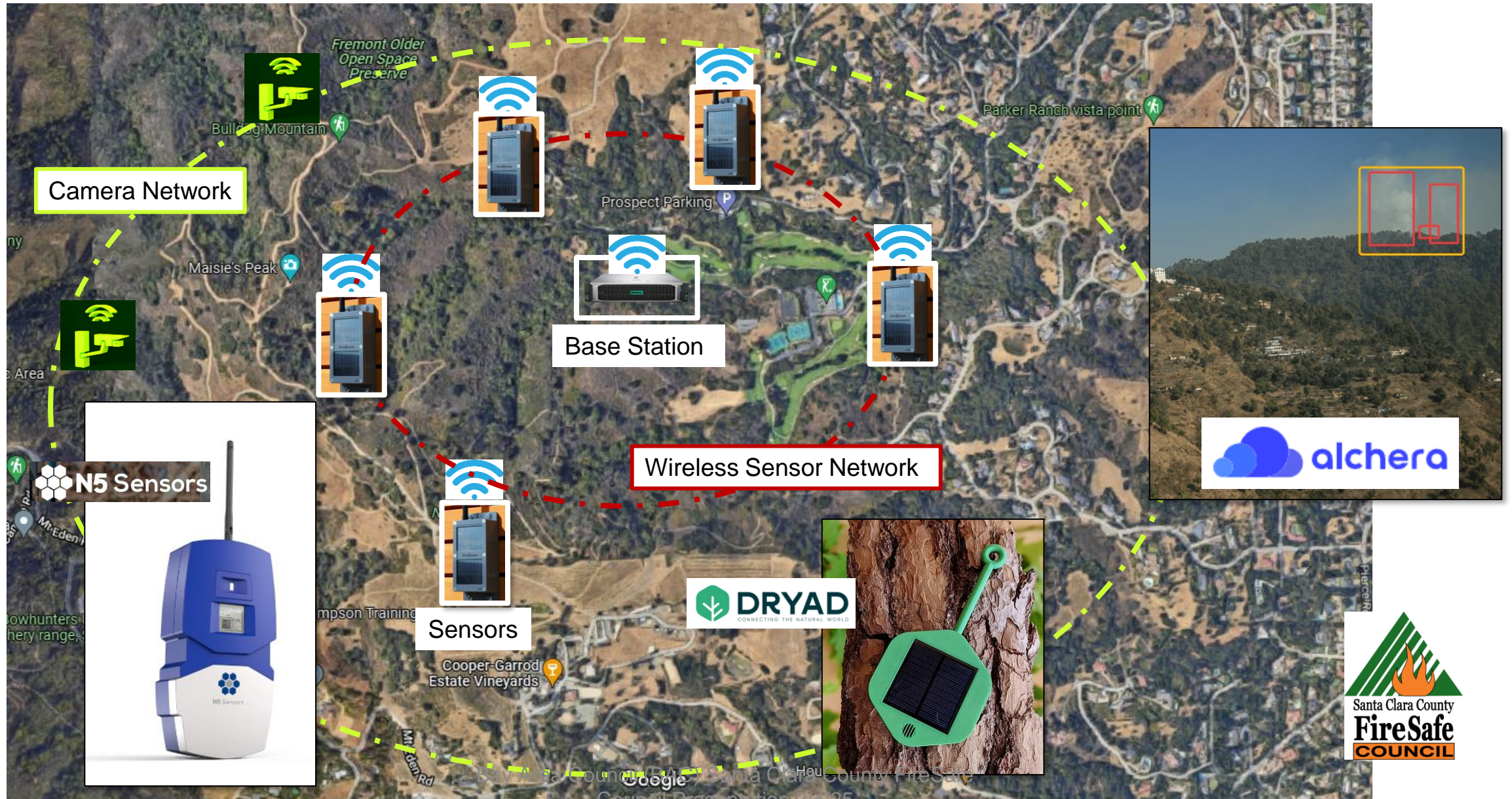
- Earliest wildfire detection possible
- Emergency communications
- Mesh network for large landscapes
- Platform for all IoT sensor types
- Deployed with Forest Health awards



Networked sensors detect fire gas and particles, air quality and chemical monitoring, heat and humidity trends. Fire alerts sent directly to mobile devices.



Example: Early Warning Wildfire Detection Networks





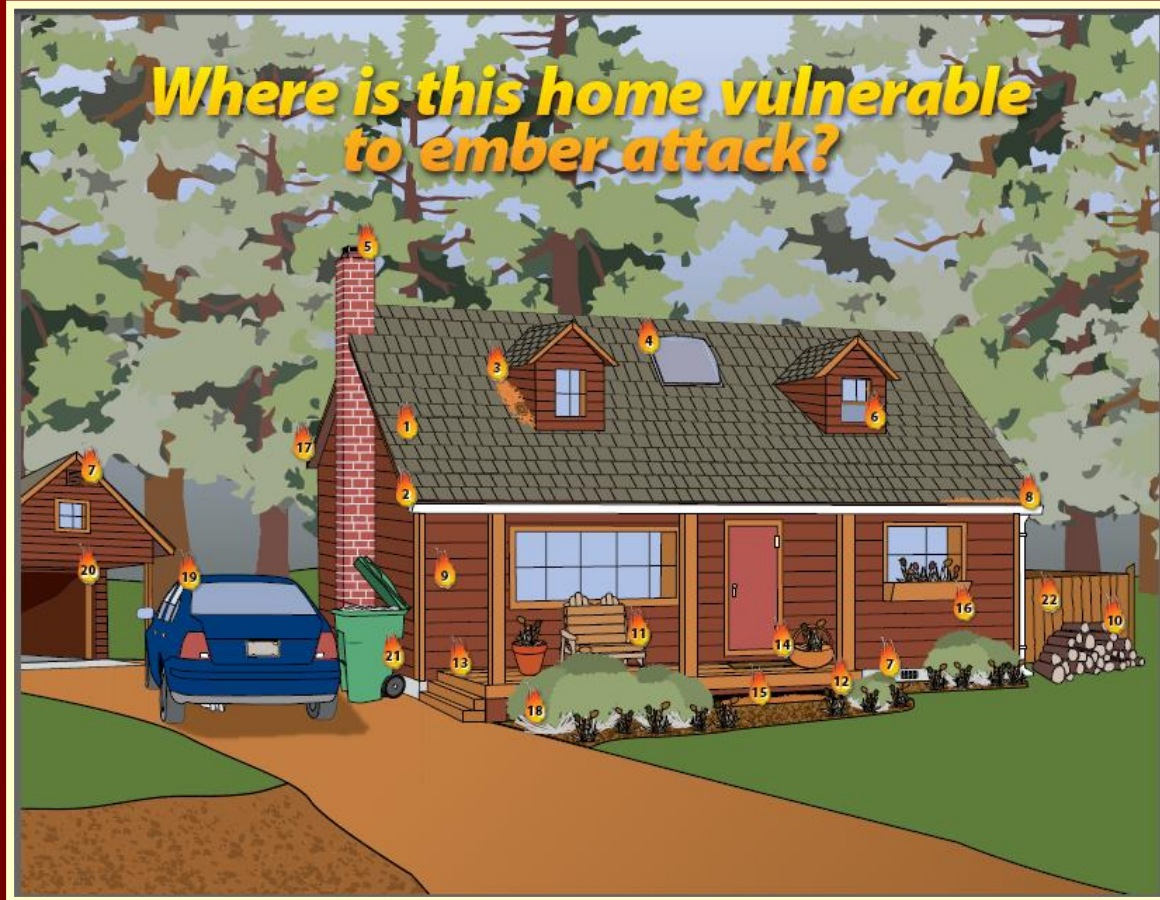
Zone Zero: 0-5 feet

Gray Zone

- no plants
- nothing flammable
- hardscapes
 - boulders
 - birdbaths
 - pathways



Home Ignition Zone-Be Ember Aware



Where are needle and leaf debris accumulating on your property?



That is where the wind will carry the embers

Home Hardening Basics

1. Roofs – Class A only (no wood shake)
2. Deck Flooring - Class A or non-combustible – no redwood floor decking, • noncombustible railings, i.e. cable rail or metal • screen or enclose ground floor decks
3. Siding – No combustible siding (no wood siding) < 36 inches to ground
4. Fencing – No combustible fencing within 30 ft of structures
5. Eaves – Ignition resistant boxed eaves required
6. Attached Structures – Noncombustible construction for all trellis, shade canopies, breezeways, etc. attached or within 30 ft. of structures
7. Venting - Vents must prevent the intrusion of all embers utilizing Vulcan, O’hagan, Brandguard or like vents
8. Gutters/Down Spouts/Gutter Guards – No combustible types
9. Landscape – 0-5 ft. zone zero with no combustibles (vegetation)
10. Detached U structures – U structures to have setbacks of 30 ft from all other structures including neighboring property structures unless built to ignition resistant requirements of habitable R1 structures.

Thank You Audience Q&A



Seth Schalet, CEO
sschalet@sccfiresafe.org
(408) 975-9591

